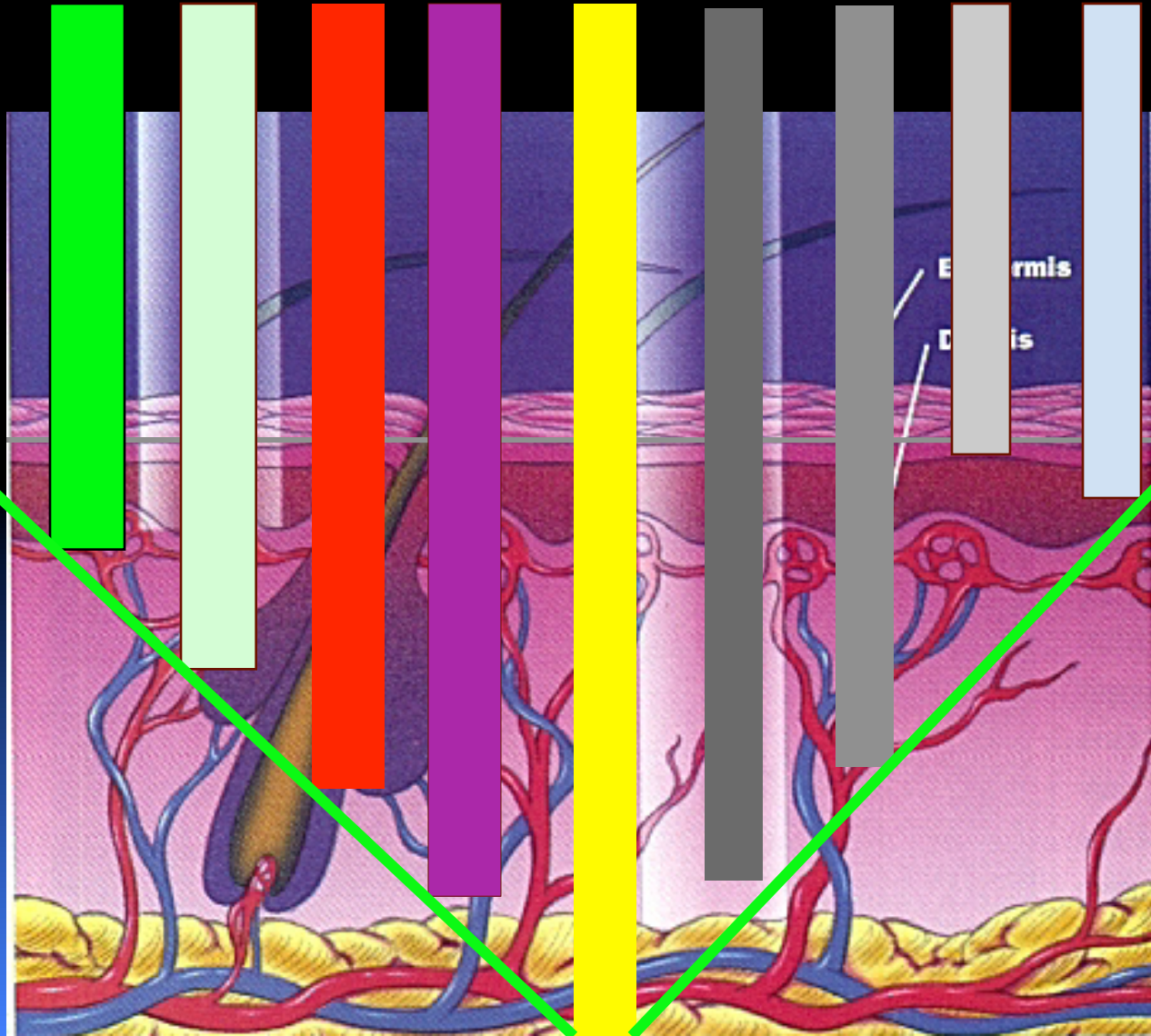


Absorption Length

532 585 755 810 1064 1320 1450 2.94 10.6



Where is the target located?

Pigmented

DE junction and Above

Vascular

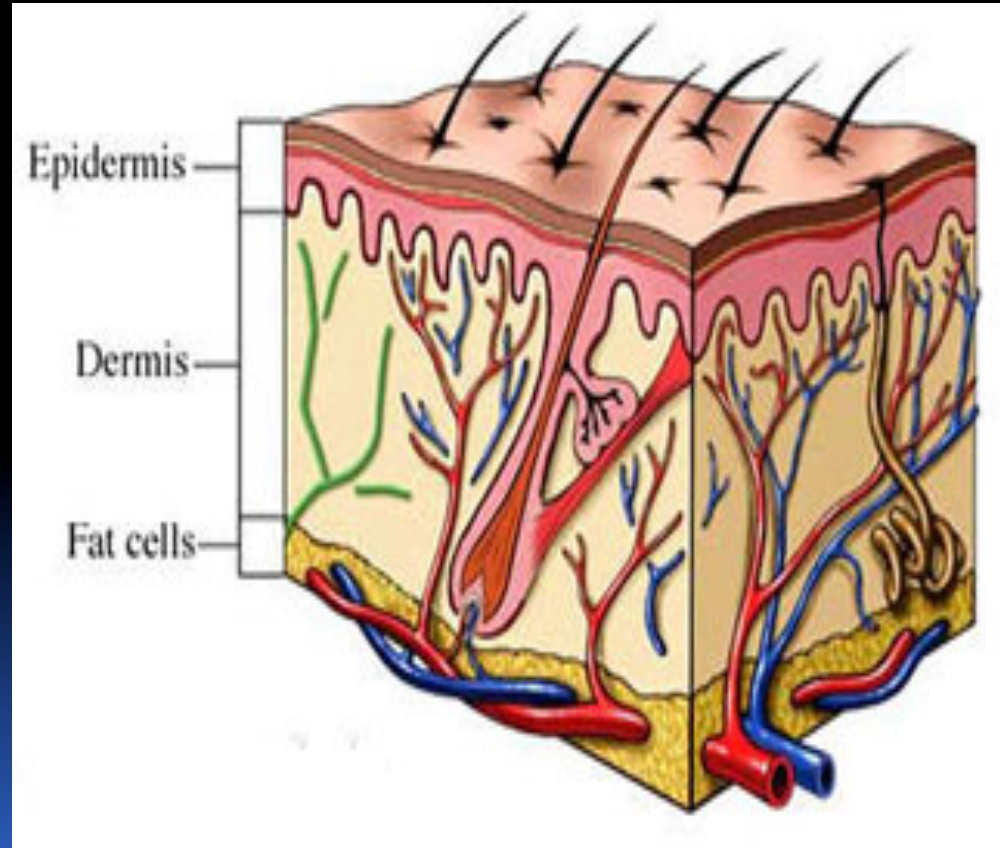
DE junction and Below

Water

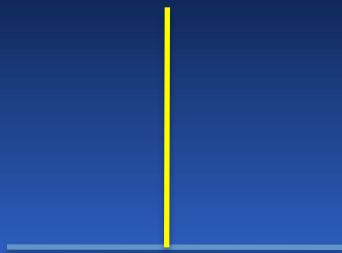
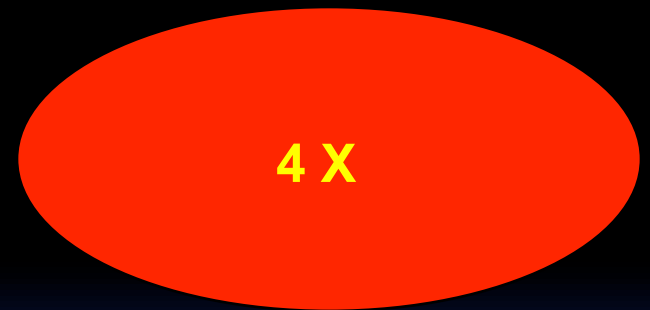
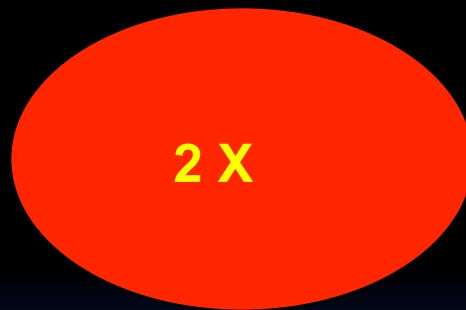
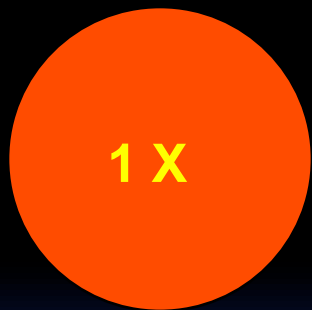
Through out the epidermis and dermis

Hair

Dermis and Subcutaneous



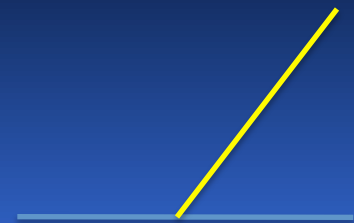
Area of a Circle vs. Oval



Full Power

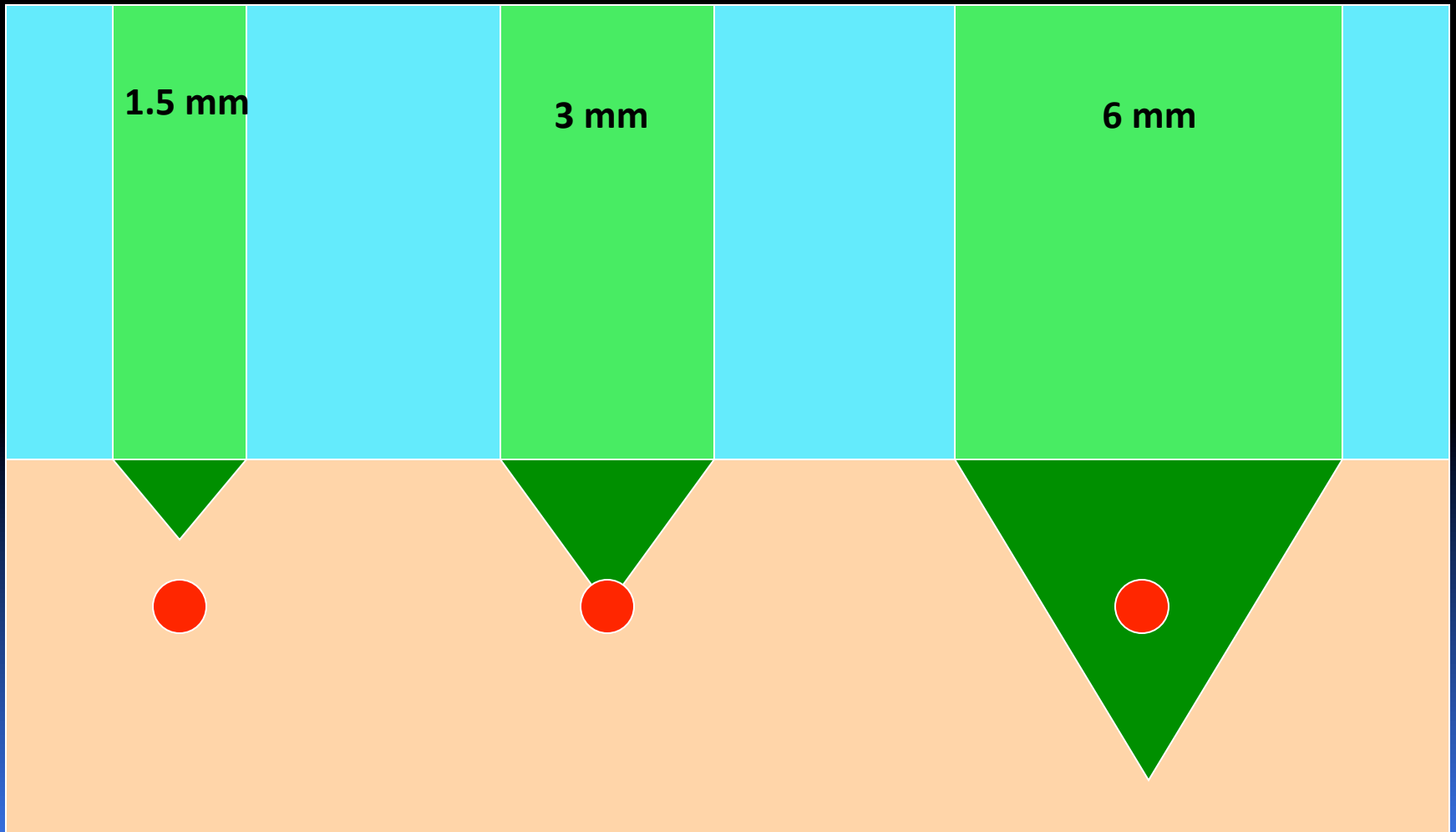


$\frac{1}{4}$ Power

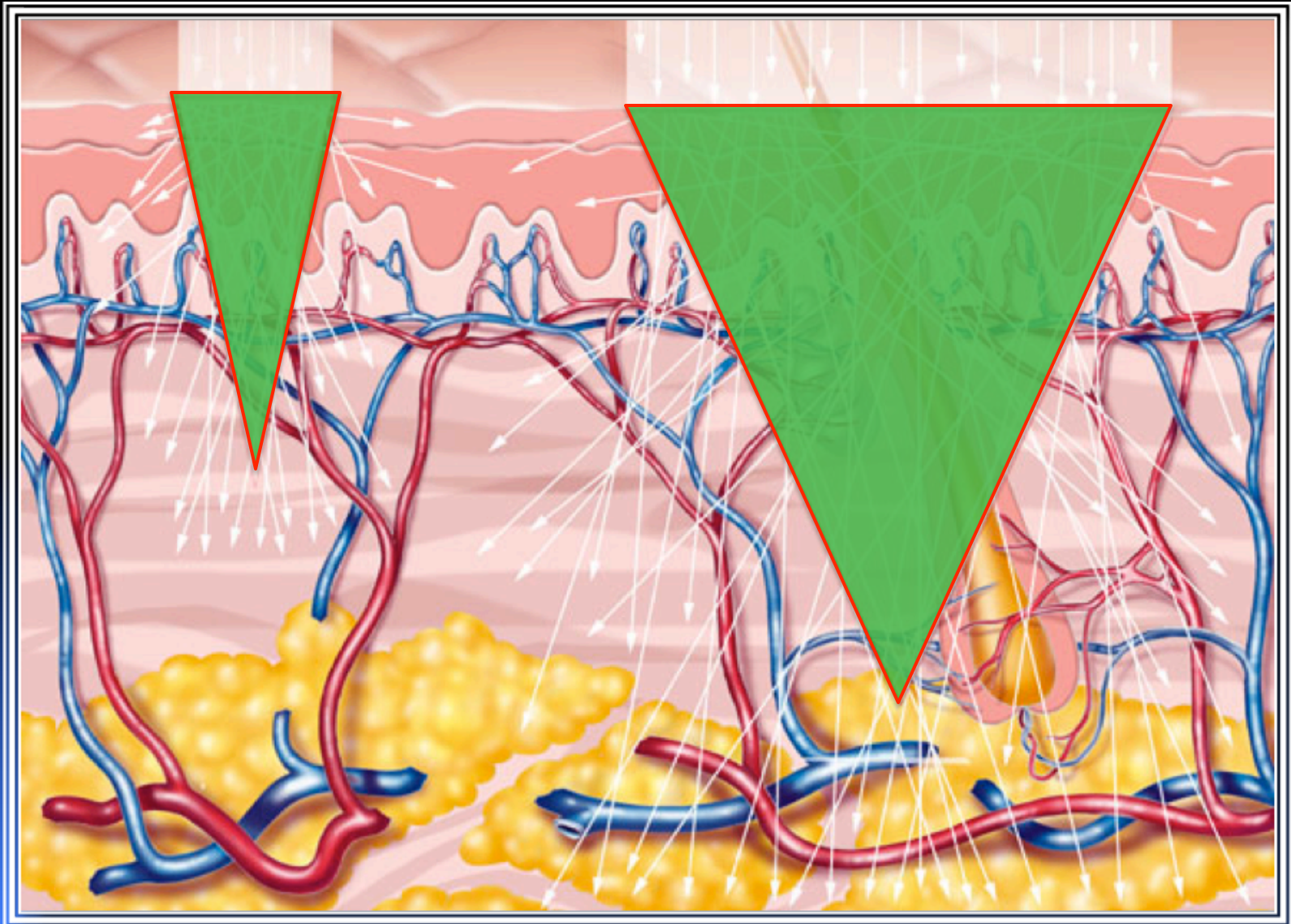


$\frac{1}{16}$ Power

Size Does Matter But there are limits



~ 63% of Effective Energy





A medical illustration showing a surgical approach to a tumor. A large, semi-transparent blue shield-like shape is positioned over a yellow, bubbly surface representing the tumor. A surgical instrument, possibly a retractor or dissector, is shown on the right side of the shield. Below the shield, red and blue vessels (arteries and veins) are visible, branching out from the tumor area. The background is dark blue.

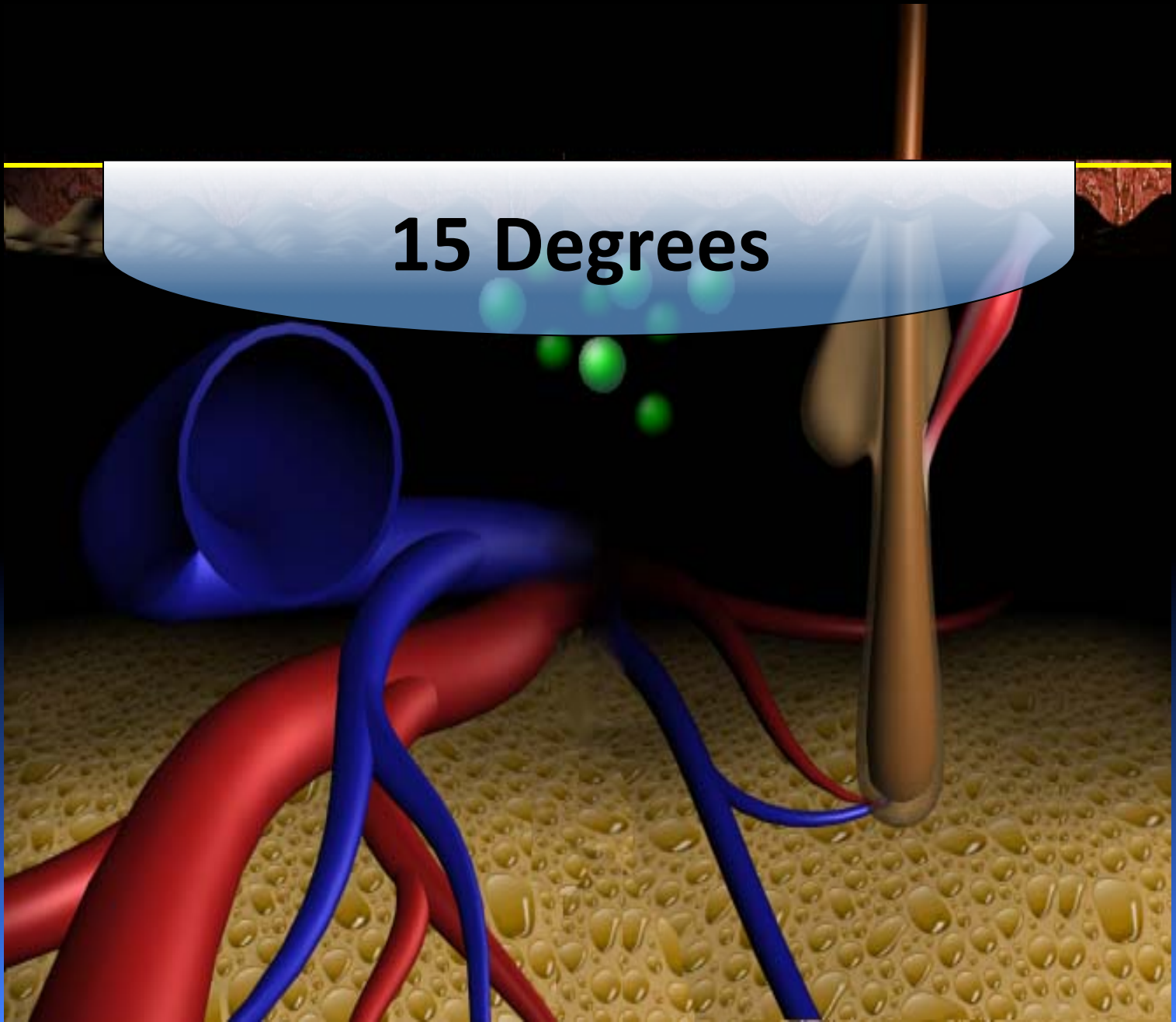
5 Degrees



A medical illustration showing a surgical approach to the spine. A vertical incision is made in the skin, and a retractor system is used to access the vertebral body. The retractor is a blue, Y-shaped structure that holds back muscle and soft tissue. A surgical instrument, a long, thin, yellowish-brown rod, is inserted into the vertebral body. The vertebral body is a large, yellowish, porous structure. The surrounding soft tissue is shown in shades of pink and red. The background is a solid blue color.

10 Degrees

15 Degrees



Richards - Merhag

	% telogen	% anagen	Telogen duration	Anagen duration	Density Hair / cm ²	Follicle depth
Scalp	13	85	3-4 mnths	2-6 yrs	350	3-5 mm
Eyebrow	90	10	3 mnths	4-8 wks		2-2.5 mm
Ear	85	15	3 mnths			
Cheeks	30-50	50-70		1 yr	880	2-4 mm
Beard- chin	20	70	10 wks	16 wks	500	2-4 mm
Upper lip	35	65	6 wks	6 wks	500	1-2.5 mm
Axillae	70	30	3 mnths	4 mnths	65	3.5-4.5 mm
Trunk	NA	NA			70	2-4.5 mm
Bikini	60	30	3 mnths	4 mnths	70	3.5-5 mm
Arm	70	20	18 wks	13 wks	80	2-4.5 mm
Leg	70	20	24 wks	16 wks	60	2.5-4 mm
Breast	70	30			65	3-4.5 mm

These are natural times, light interrupts these rates